

Happy Holidays

from all SPCA staff and animals!



With the summer holidays just around the corner, now is the perfect time to explore New Zealand and experience everything our amazing country has to offer! One of the most exciting things you, your friends, family and whānau can do this summer is to get out and about in nature.

Aotearoa has some truly miraculous natural nōhanga (habitats), where so many incredible animals have made their homes. It can be very exciting to explore these areas and see these animals, however, when in these environments, it's important to remember that we take care and respect these places and the animals who live there.

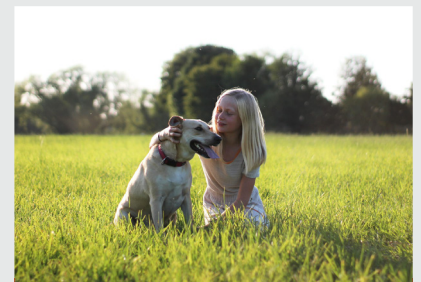
Jump into this holiday issue of Kind Matters to learn all about how we can enjoy the outdoors and at the same time, ensure that we keep the animals we share these environments with safe, happy and healthy.



What's Inside?



Exploring Aotearoa
Summer holidays in
New Zealand



Keeping Dogs Safe
Tips for summer adventures
with your canine friend



**Mystery Challenge
Revealed!**
Check out Read NZ's SPCA
Reading Challenge

and much
more...



Visit www.kids.spcaeducation.org.nz



Exploring Aotearoa

This summer is a great opportunity to see and do things in New Zealand that you've never seen or done before. It's also a wonderful time to visit an old favourite beach, park, or reserve!

Wherever you choose to go, while visiting these precious environments, it's important to remember that these are the homes of thousands of animals. This means it is essential that we are considerate of the animals and their habitats, giving them the respect they deserve.

Check out the map below to learn where you can see wildlife, and read on to learn about how we can keep wildlife taonga safe and happy these summer holidays!



**TĪKAPA MOANA
THE HAURAKI GULF**

Tikapa Moana (Hauraki Gulf), just off the coast of Auckland, is a place that's buzzing with wildlife! In fact, it's a popular place to see orca, dolphins, whales, and little penguins while out on boating adventures.

Tikapa Moana is also where you can find Tiritiri Matangi, one of New Zealand's stunning wildlife sanctuaries. This magical forest and bush island is home to kōkako, wētā, tuatara, tīeke (saddleback), hihi (stitchbird), takahē, kororā (little penguins), as well as many other amazing bird wildlife - some of which can be found nowhere else in the world but NZ!



**IPIPIRI
BAY OF ISLANDS**

Bay of Islands is a beautiful place to spot lots of different wildlife. When you visit this northern area of NZ, you may be lucky enough to see bottlenose dolphin, common dolphin, orca, and even Bryde's whales.

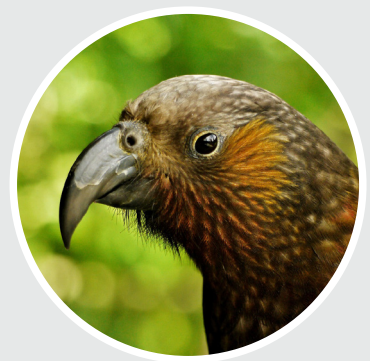
Not only are there chances to see super cool marine wildlife, but you could also see kākāriki (red crowned parakeet), pāteke (brown teal ducks), tīeke (Northland saddleback), and toutouwai (North Island robin).



**ZEALANDIA,
WELLINGTON**

If you find yourself in Wellington this summer, Zealandia is the place to go to see precious and protected wildlife.

Zealandia is an ecosanctuary, dedicated to conserving and protecting native and endemic wildlife. Here you can see tuatara, kākā, the moko kākāriki (Wellington green gecko), the Maud Island frog, tree and cave wētā, little spotted kiwi, tītītipounamu (rifleman), several species of kawau (shag), as well as many more animals thrive!



The magical mountainous region of Arthur's Pass, on the South Island of New Zealand, is the perfect alpine habitat for the world's only alpine parrot. You guessed it – the kea!

In addition to the mountains, Arthur's Pass has fresh rushing waters and lush forests that make it the ideal place for whio (blue duck), to nest, and where you may see roa (great spotted kiwi)!



ARTHUR'S PASS



KAIKŌURA



If you're wanting the chance to see marine wildlife this summer, Kaikōura may just be the place for you and your family to visit – it has marine life galore! Kaikōura is known for the amazing tutumairekurai/tūpoupou (hector's dolphins), dusky dolphins, humpback whales, blue whales, and New Zealand fur seals (kekeno) that you can often see there.

In addition to these animals, you can see many sea birds like toroa (albatross), kororā (little penguins), tākapu (gannets), hākoakoa (skuas), and different species of petrels, gulls, and terns. This is a sea-life lover's paradise!



RAKIURA STEWART ISLAND

If a trip to Stewart Island is in your holiday plans, you may be lucky enough to hear, or better yet, see, tokoeka (Southern brown kiwi)! Kiwi are a truly special animal and the only bird with nostrils on the end of their beak – how unique!

A walk through the woods or a kayak along the coast give the opportunity to also see tawaki (Fiordland crested penguins), weka, and tītī (sooty shearwaters), to name a few!



OTAGO PENINSULA

This is one of the places you can see the incredibly rare and shy hoiho (yellow-eyed penguin). Hoiho are just one of the amazing animals you can spot on the beaches, shorelines, wetland, and forest habitats of the Otago Peninsula.

This South Island peninsula is also where you can see royal albatross, kekeno (New Zealand fur seals), rāpoka/whakahao (New Zealand sea lions), in addition to pīwauwau (rock wrens), and kārearea (NZ falcons).



No matter where you find yourself this summer and whatever wildlife you see, below are some key things to remember:

- › Learn about the area you're visiting and the wildlife you can see there
- › Do not feed wild animals
- › Never litter – always dispose of waste and rubbish properly
- › Leave natural objects where they belong
- › Be considerate and respectful of wildlife
- › Take extra care if you have dogs with you
- › The use of drones poses a number of health and safety risks

Visit the [Wildlife](#) section of SPCA's Kids' Portal to learn more!

Last but not least – perhaps your summer holiday will be spent in...

**Your own town/city
and backyard!**



A staycation is a wonderful and relaxing way to spend the holidays. If you're staying home, it doesn't mean you can't appreciate some natural habitats and wildlife.

Here in New Zealand, you're never far away from the beach, a local park or forest, and sometimes, we just have to look out our windows to see wildlife. Some backyard wildlife you may see are tūi, kereru (NZ wood pigeon), tauhou (silveryeye), ruru (morepork), korimako (bellbird), and pīwakawaka (fantails)!

Habitat and Wildlife Matching

Match the type of habitat below with an example of an animal that you would most likely see living there!

1. Urban, Backyard, and Garden



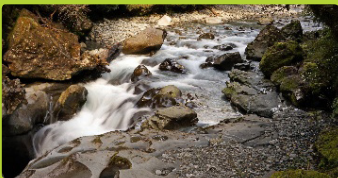
2. Forest and Bush



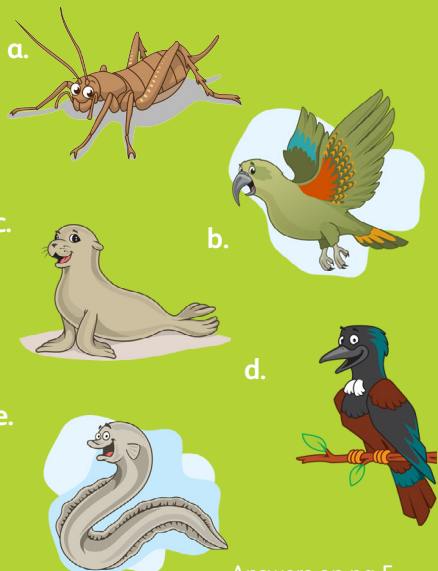
3. Ocean, Coastal, and Beach



4. Freshwater and Wetlands



5. Alpine



Answers on pg 5.



Keeping dogs safe this summer

Not only are there lots of things we need to do as responsible guardians when it comes to protecting wildlife, there are also lots of things we need to think about when it comes to keeping our canine companions safe and happy this summer!

For example, if you're heading out on a camping adventure, for a swim at the beach, on a hike, or a walk around your neighbourhood, have a look at the important summer tips to think about when it comes to your dog:

Adventures and traveling

Before you get in the car to go check out a new beach or bush walk, first check online to see if dogs are allowed in these areas. If dogs are allowed, it's also key to check any rules regarding our canine friends for these area.

For example – is it an on-lead area or is your dog allowed off-lead? Are there certain areas, like sand dunes, that you and your dog cannot go? Are there time restrictions? Many of these rules are in place to help protect natural habitats and to keep our precious wildlife safe, so be sure to follow them.

It's also essential to pack fresh, clean water, a no-spill dish, lead, collar, toys, treats, animal sunscreen (if needed), and anything else your dog may need before you go so that everyone has the best day!

Paw Safety

Your dog's feet can get burnt and blistered on hot pavement and beach sand during the hot days of summer. This is super painful for them. Before letting your dog on these surfaces, check if it is a safe temperature by holding the back of your hand on the pavement or sand for five seconds. If it is too hot for you to hold your hand there, then your dog shouldn't be out walking on it.

To avoid burnt paws and overheating from the sun, taking your dog out for walks in the morning and evenings when it's much cooler is best!

Dogs in cars

Dogs should never ever be left in a hot car unattended. Leaving dogs in a hot car is extremely dangerous and can have devastating results.

Cars can heat up super quickly, especially in summer. In a hot car, even with the windows slightly open or in the shade, panting is not enough to keep a dog's body temperature within a safe range.

If you're not going somewhere where your dog can come, often the best option is to leave your dog at home (or with a friend/family member/or kennel if you'll be away for more than a few hours).

Making a Difference

There are heaps of different ways you can make a positive difference in animals' lives all year round – however, below are two activities that you can do this summer to help animals in need!

Organize a community clean-up!

This summer, join a community clean-up in your area, or you can encourage your friends, family, and whānau to come together and organize your very own! Cleaning up rubbish from beaches, parks, forests, etc. is a kind conservation action you can take to help wild animals!

Make this activity extra fun by turning it into a game. Challenge your friend to an epic rubbish scavenger hunt using the card below, or you can create your own!

Community Clean-Up Scavenger Hunt

- | | | |
|---------------------------------------|-------------------------------------|------------------------------------|
| <input type="radio"/> Plastic bottle | <input type="radio"/> Straw | <input type="radio"/> Fishing line |
| <input type="radio"/> Drink can | <input type="radio"/> Chip bag | <input type="radio"/> Balloon |
| <input type="radio"/> Paper | <input type="radio"/> Bottle lid | |
| <input type="radio"/> Plastic utensil | <input type="radio"/> Candy wrapper | |

Scoring:

1 point for each item you find (+1 more point if you find more than one of each).

3 bonus points if you find them all.

5 bonus point per rubbish bag filled.



Make enrichment toys for animals in need!

The summer holidays are great fun, but sometimes you may find yourself feeling a bit bored, searching for something exciting to do.

Did you know that animals can feel this way too? Just as we have books, games, TV, and activities to keep us entertained, animals need things that keep them from getting bored as well.

This is where enrichment comes in! Enrichment toys allow animals to express their natural behaviours, as well as keep them mentally and physically fit. Why not take the time this holiday season to make both yours' and an animals' day more exciting?

Make and donate enrichment toys to the animals at your local SPCA using the instructions from SPCA's Kids' Portal [Things to Make or Do](#) section!

Mystery Challenge Reveal!

We're very excited to finally announce the big Mystery Challenge... drumroll please!



Join the SPCA Reading Challenge this summer



Our good friends at Read NZ Te Pou Muramura have partnered with SPCA for a super fun SPCA Reading Challenge!

It's easy to sign up and there's a chance to win some really cool prizes!

WIN!
Gift cards
and new
books

1. Visit Read NZ's website [here](#) and sign up.

Sign up for free by registering at reading-challenge.org.nz

2. Choose your favourite SPCA Reading Challenge team.
3. Log your books as you read them (Guess what? Reading an SPCA Kind Matters newsletter counts as one book!)
4. Be in to win prizes!

We'd love to see photos of you reading to your companion animal! You can email them to education@sPCA.nz.

Photo Credit: Hymenolaimus malacorhynchus (Blue Duck, Whio) by Jake Osborne. No changes made: <https://www.flickr.com/photos/theylooklikeus/2672887717/>

Send us photos of the habitats
and wildlife you see this summer!

Email education@sPCA.nz



Answers:
1. d: tui
2. a: wētā
3. c: seal
4. e: eel
5. b: kea